

AMENDMENTS SHEET
DEVELOPMENT MANAGEMENT COMMITTEE
6th March 2024

Section C, Item for determination

Item 6; Pages 13 - 36.

Application No. 23/00879/FULPP

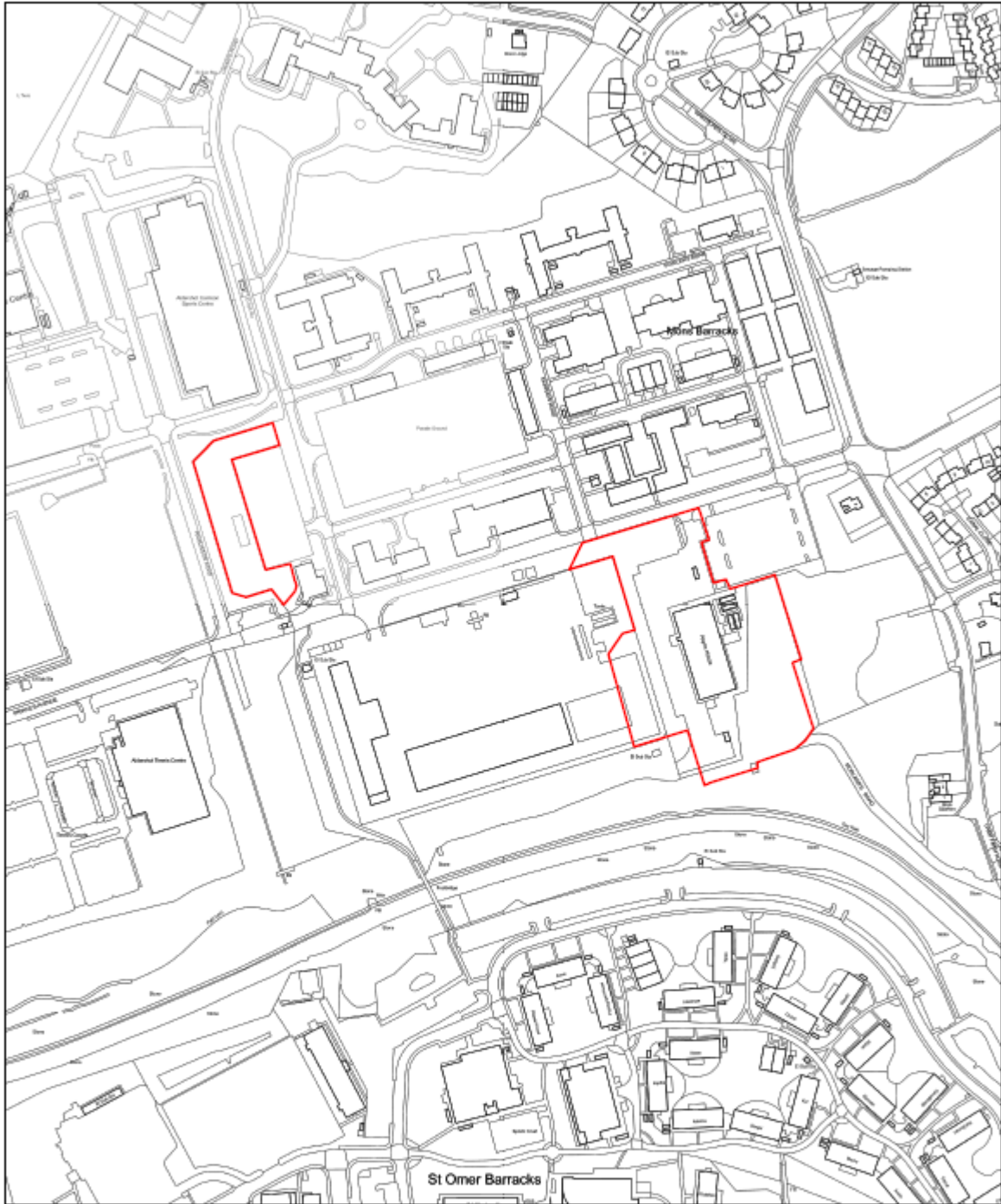
Proposal Demolition of existing office building and erection of a new build workshop for military vehicles, together with hardstanding areas and associated drainage, infrastructure and landscaping.

Address **Mons Barracks, Princes Avenue, Aldershot, GU11 2LF**


Update to Report

The plans provided on plans 30 – 36 are inverted. The non-inverted plans are provided here;

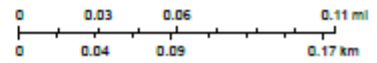
ArcGIS Web Map



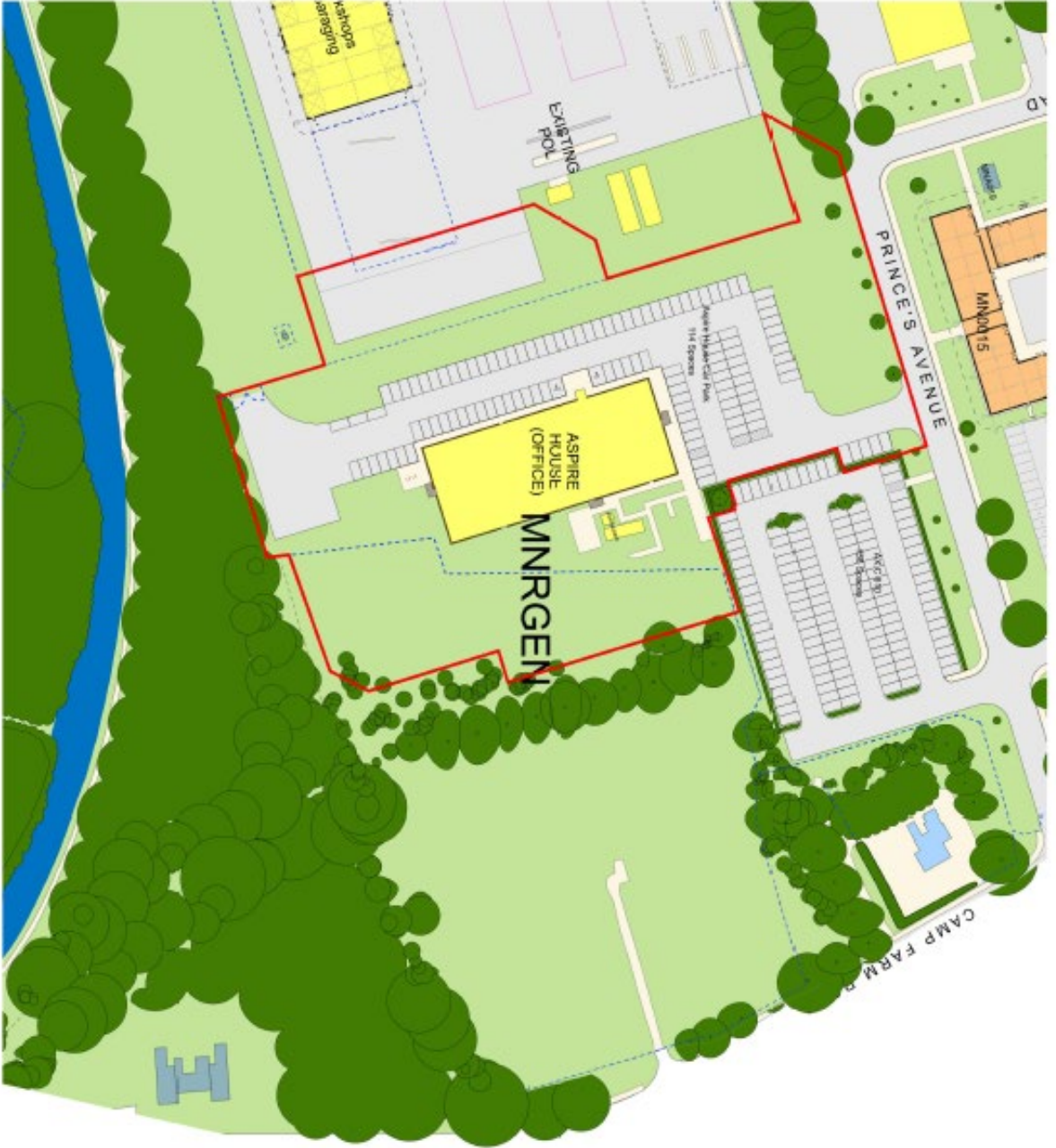
2/22/2024, 9:46:53 AM

 Planning Application

1:2,336



© Crown copyright and database rights 2023 Ordnance Survey 100024264



— APPLICATION BOUNDARY

© 2024 Surveying Ltd.
 Registered Professional Surveyors
 and Land Use Planners
 1000 West Beaver Creek Road
 Suite 1000, Richmond Hill, Ontario L4B 3N2
 Canada
 Phone: (905) 882-2222
 Fax: (905) 882-2223
 Email: info@surveying.ca



A 1:1000 Scale
 Date: 2024-04-11
 Project: 31-MNRGEN-43-0A-A1-5006 A



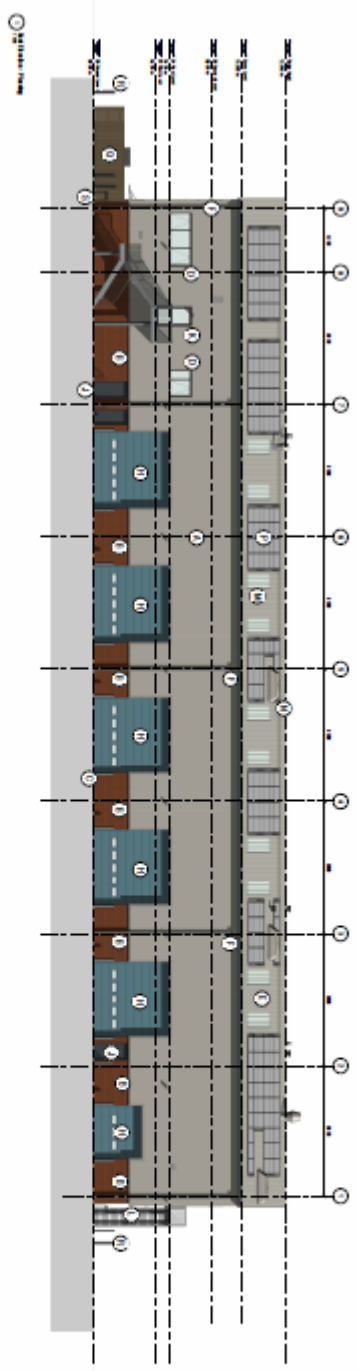
Aspire Consulting - Project Number: Aldershot - 02471327
 50 West Beaver Creek Road, Richmond Hill, Ontario L4B 3N2
 Phone: (905) 882-2222
 Fax: (905) 882-2223
 Email: info@surveying.ca

PROJECT ALLENTREE CONSULTANT
 PROJECT DESIGN PROFESSIONAL
 2024/04/11
 PROJECT NUMBER: 31-MNRGEN-43-0A-A1-5006 A

Aldershot Garrison
 Infrastructure

MNRGEN
 Existing Site Plan
 1:1000 @ A1, 1:1000 @ A3

31-MNRGEN-43-0A-A1-5006 A
 PLANNING




MATERIAL LIST	
NO	REMARKS
1	CONCRETE
2	STEEL
3	BRICK
4	CEMENT
5	SAND
6	AGGREGATE
7	ROOFING
8	GLASS
9	DOOR
10	WINDOW
11	PLASTER
12	PAINT
13	INSULATION
14	MECHANICAL
15	ELECTRICAL
16	PLUMBING
17	LANDSCAPE
18	INTERIOR FINISH
19	EXTERIOR FINISH
20	MECHANICAL EQUIPMENT
21	ELECTRICAL EQUIPMENT
22	PLUMBING EQUIPMENT
23	LANDSCAPE EQUIPMENT
24	INTERIOR EQUIPMENT
25	EXTERIOR EQUIPMENT
26	MECHANICAL MATERIALS
27	ELECTRICAL MATERIALS
28	PLUMBING MATERIALS
29	LANDSCAPE MATERIALS
30	INTERIOR MATERIALS
31	EXTERIOR MATERIALS
32	MECHANICAL ACCESSORIES
33	ELECTRICAL ACCESSORIES
34	PLUMBING ACCESSORIES
35	LANDSCAPE ACCESSORIES
36	INTERIOR ACCESSORIES
37	EXTERIOR ACCESSORIES
38	MECHANICAL SUPPLIES
39	ELECTRICAL SUPPLIES
40	PLUMBING SUPPLIES
41	LANDSCAPE SUPPLIES
42	INTERIOR SUPPLIES
43	EXTERIOR SUPPLIES
44	MECHANICAL TOOLS
45	ELECTRICAL TOOLS
46	PLUMBING TOOLS
47	LANDSCAPE TOOLS
48	INTERIOR TOOLS
49	EXTERIOR TOOLS
50	MECHANICAL PARTS
51	ELECTRICAL PARTS
52	PLUMBING PARTS
53	LANDSCAPE PARTS
54	INTERIOR PARTS
55	EXTERIOR PARTS
56	MECHANICAL HARDWARE
57	ELECTRICAL HARDWARE
58	PLUMBING HARDWARE
59	LANDSCAPE HARDWARE
60	INTERIOR HARDWARE
61	EXTERIOR HARDWARE
62	MECHANICAL SUPPLEMENTALS
63	ELECTRICAL SUPPLEMENTALS
64	PLUMBING SUPPLEMENTALS
65	LANDSCAPE SUPPLEMENTALS
66	INTERIOR SUPPLEMENTALS
67	EXTERIOR SUPPLEMENTALS
68	MECHANICAL FINISHES
69	ELECTRICAL FINISHES
70	PLUMBING FINISHES
71	LANDSCAPE FINISHES
72	INTERIOR FINISHES
73	EXTERIOR FINISHES
74	MECHANICAL PAINTS
75	ELECTRICAL PAINTS
76	PLUMBING PAINTS
77	LANDSCAPE PAINTS
78	INTERIOR PAINTS
79	EXTERIOR PAINTS
80	MECHANICAL COATINGS
81	ELECTRICAL COATINGS
82	PLUMBING COATINGS
83	LANDSCAPE COATINGS
84	INTERIOR COATINGS
85	EXTERIOR COATINGS
86	MECHANICAL SEALANTS
87	ELECTRICAL SEALANTS
88	PLUMBING SEALANTS
89	LANDSCAPE SEALANTS
90	INTERIOR SEALANTS
91	EXTERIOR SEALANTS
92	MECHANICAL ADHESIVES
93	ELECTRICAL ADHESIVES
94	PLUMBING ADHESIVES
95	LANDSCAPE ADHESIVES
96	INTERIOR ADHESIVES
97	EXTERIOR ADHESIVES
98	MECHANICAL GROUTS
99	ELECTRICAL GROUTS
100	PLUMBING GROUTS
101	LANDSCAPE GROUTS
102	INTERIOR GROUTS
103	EXTERIOR GROUTS
104	MECHANICAL MORTARS
105	ELECTRICAL MORTARS
106	PLUMBING MORTARS
107	LANDSCAPE MORTARS
108	INTERIOR MORTARS
109	EXTERIOR MORTARS
110	MECHANICAL CONCRETE
111	ELECTRICAL CONCRETE
112	PLUMBING CONCRETE
113	LANDSCAPE CONCRETE
114	INTERIOR CONCRETE
115	EXTERIOR CONCRETE
116	MECHANICAL BRICKS
117	ELECTRICAL BRICKS
118	PLUMBING BRICKS
119	LANDSCAPE BRICKS
120	INTERIOR BRICKS
121	EXTERIOR BRICKS
122	MECHANICAL BLOCKS
123	ELECTRICAL BLOCKS
124	PLUMBING BLOCKS
125	LANDSCAPE BLOCKS
126	INTERIOR BLOCKS
127	EXTERIOR BLOCKS
128	MECHANICAL STONES
129	ELECTRICAL STONES
130	PLUMBING STONES
131	LANDSCAPE STONES
132	INTERIOR STONES
133	EXTERIOR STONES
134	MECHANICAL TILES
135	ELECTRICAL TILES
136	PLUMBING TILES
137	LANDSCAPE TILES
138	INTERIOR TILES
139	EXTERIOR TILES
140	MECHANICAL CARPETS
141	ELECTRICAL CARPETS
142	PLUMBING CARPETS
143	LANDSCAPE CARPETS
144	INTERIOR CARPETS
145	EXTERIOR CARPETS
146	MECHANICAL FLOORS
147	ELECTRICAL FLOORS
148	PLUMBING FLOORS
149	LANDSCAPE FLOORS
150	INTERIOR FLOORS
151	EXTERIOR FLOORS
152	MECHANICAL WALLS
153	ELECTRICAL WALLS
154	PLUMBING WALLS
155	LANDSCAPE WALLS
156	INTERIOR WALLS
157	EXTERIOR WALLS
158	MECHANICAL CEILING
159	ELECTRICAL CEILING
160	PLUMBING CEILING
161	LANDSCAPE CEILING
162	INTERIOR CEILING
163	EXTERIOR CEILING
164	MECHANICAL ROOFING
165	ELECTRICAL ROOFING
166	PLUMBING ROOFING
167	LANDSCAPE ROOFING
168	INTERIOR ROOFING
169	EXTERIOR ROOFING
170	MECHANICAL GLASS
171	ELECTRICAL GLASS
172	PLUMBING GLASS
173	LANDSCAPE GLASS
174	INTERIOR GLASS
175	EXTERIOR GLASS
176	MECHANICAL DOORS
177	ELECTRICAL DOORS
178	PLUMBING DOORS
179	LANDSCAPE DOORS
180	INTERIOR DOORS
181	EXTERIOR DOORS
182	MECHANICAL WINDOWS
183	ELECTRICAL WINDOWS
184	PLUMBING WINDOWS
185	LANDSCAPE WINDOWS
186	INTERIOR WINDOWS
187	EXTERIOR WINDOWS
188	MECHANICAL STAIRS
189	ELECTRICAL STAIRS
190	PLUMBING STAIRS
191	LANDSCAPE STAIRS
192	INTERIOR STAIRS
193	EXTERIOR STAIRS
194	MECHANICAL ELEVATORS
195	ELECTRICAL ELEVATORS
196	PLUMBING ELEVATORS
197	LANDSCAPE ELEVATORS
198	INTERIOR ELEVATORS
199	EXTERIOR ELEVATORS
200	MECHANICAL RAMP
201	ELECTRICAL RAMP
202	PLUMBING RAMP
203	LANDSCAPE RAMP
204	INTERIOR RAMP
205	EXTERIOR RAMP
206	MECHANICAL BALCONY
207	ELECTRICAL BALCONY
208	PLUMBING BALCONY
209	LANDSCAPE BALCONY
210	INTERIOR BALCONY
211	EXTERIOR BALCONY
212	MECHANICAL TERRACE
213	ELECTRICAL TERRACE
214	PLUMBING TERRACE
215	LANDSCAPE TERRACE
216	INTERIOR TERRACE
217	EXTERIOR TERRACE
218	MECHANICAL PORCH
219	ELECTRICAL PORCH
220	PLUMBING PORCH
221	LANDSCAPE PORCH
222	INTERIOR PORCH
223	EXTERIOR PORCH
224	MECHANICAL PATIO
225	ELECTRICAL PATIO
226	PLUMBING PATIO
227	LANDSCAPE PATIO
228	INTERIOR PATIO
229	EXTERIOR PATIO
230	MECHANICAL DRIVEWAY
231	ELECTRICAL DRIVEWAY
232	PLUMBING DRIVEWAY
233	LANDSCAPE DRIVEWAY
234	INTERIOR DRIVEWAY
235	EXTERIOR DRIVEWAY
236	MECHANICAL GARAGE
237	ELECTRICAL GARAGE
238	PLUMBING GARAGE
239	LANDSCAPE GARAGE
240	INTERIOR GARAGE
241	EXTERIOR GARAGE
242	MECHANICAL PORCH
243	ELECTRICAL PORCH
244	PLUMBING PORCH
245	LANDSCAPE PORCH
246	INTERIOR PORCH
247	EXTERIOR PORCH
248	MECHANICAL PATIO
249	ELECTRICAL PATIO
250	PLUMBING PATIO
251	LANDSCAPE PATIO
252	INTERIOR PATIO
253	EXTERIOR PATIO
254	MECHANICAL DRIVEWAY
255	ELECTRICAL DRIVEWAY
256	PLUMBING DRIVEWAY
257	LANDSCAPE DRIVEWAY
258	INTERIOR DRIVEWAY
259	EXTERIOR DRIVEWAY
260	MECHANICAL GARAGE
261	ELECTRICAL GARAGE
262	PLUMBING GARAGE
263	LANDSCAPE GARAGE
264	INTERIOR GARAGE
265	EXTERIOR GARAGE

1:100
 1/2" = 1'-0"



MATERIAL LIST	
NO	REMARKS
1	CONCRETE
2	STEEL
3	BRICK
4	CEMENT
5	SAND
6	AGGREGATE
7	ROOFING
8	GLASS
9	DOOR
10	WINDOW
11	PLASTER
12	PAINT
13	INSULATION
14	MECHANICAL
15	ELECTRICAL
16	PLUMBING
17	LANDSCAPE
18	INTERIOR FINISH
19	EXTERIOR FINISH
20	MECHANICAL EQUIPMENT
21	ELECTRICAL EQUIPMENT
22	PLUMBING EQUIPMENT
23	LANDSCAPE EQUIPMENT
24	INTERIOR EQUIPMENT
25	EXTERIOR EQUIPMENT
26	MECHANICAL MATERIALS
27	ELECTRICAL MATERIALS
28	PLUMBING MATERIALS
29	LANDSCAPE MATERIALS
30	INTERIOR MATERIALS
31	EXTERIOR MATERIALS
32	MECHANICAL ACCESSORIES
33	ELECTRICAL ACCESSORIES
34	PLUMBING ACCESSORIES
35	LANDSCAPE ACCESSORIES
36	INTERIOR ACCESSORIES
37	EXTERIOR ACCESSORIES
38	MECHANICAL SUPPLIES
39	ELECTRICAL SUPPLIES
40	PLUMBING SUPPLIES
41	LANDSCAPE SUPPLIES
42	INTERIOR SUPPLIES
43	EXTERIOR SUPPLIES
44	MECHANICAL TOOLS
45	ELECTRICAL TOOLS
46	PLUMBING TOOLS
47	LANDSCAPE TOOLS
48	INTERIOR TOOLS
49	EXTERIOR TOOLS
50	MECHANICAL PARTS
51	ELECTRICAL PARTS
52	PLUMBING PARTS
53	LANDSCAPE PARTS
54	INTERIOR PARTS
55	EXTERIOR PARTS
56	MECHANICAL SUPPLEMENTALS
57	ELECTRICAL SUPPLEMENTALS
58	PLUMBING SUPPLEMENTALS
59	LANDSCAPE SUPPLEMENTALS
60	INTERIOR SUPPLEMENTALS
61	EXTERIOR SUPPLEMENTALS
62	MECHANICAL FINISHES
63	ELECTRICAL FINISHES
64	PLUMBING FINISHES
65	LANDSCAPE FINISHES
66	INTERIOR FINISHES
67	EXTERIOR FINISHES
68	MECHANICAL PAINTS
69	ELECTRICAL PAINTS
70	PLUMBING PAINTS
71	LANDSCAPE PAINTS
72	INTERIOR PAINTS
73	EXTERIOR PAINTS
74	MECHANICAL COATINGS
75	ELECTRICAL COATINGS
76	PLUMBING COATINGS
77	LANDSCAPE COATINGS
78	INTERIOR COATINGS
79	EXTERIOR COATINGS
80	MECHANICAL SEALANTS
81	ELECTRICAL SEALANTS
82	PLUMBING SEALANTS
83	LANDSCAPE SEALANTS
84	INTERIOR SEALANTS
85	EXTERIOR SEALANTS
86	MECHANICAL ADHESIVES
87	ELECTRICAL ADHESIVES
88	PLUMBING ADHESIVES
89	LANDSCAPE ADHESIVES
90	INTERIOR ADHESIVES
91	EXTERIOR ADHESIVES
92	MECHANICAL GROUTS
93	ELECTRICAL GROUTS
94	PLUMBING GROUTS
95	LANDSCAPE GROUTS
96	INTERIOR GROUTS
97	EXTERIOR GROUTS
98	MECHANICAL MORTARS
99	ELECTRICAL MORTARS
100	PLUMBING MORTARS
101	LANDSCAPE MORTARS
102	INTERIOR MORTARS
103	EXTERIOR MORTARS
104	MECHANICAL CONCRETE
105	ELECTRICAL CONCRETE
106	PLUMBING CONCRETE
107	LANDSCAPE CONCRETE
108	INTERIOR CONCRETE
109	EXTERIOR CONCRETE
110	MECHANICAL BRICKS
111	ELECTRICAL BRICKS
112	PLUMBING BRICKS
113	LANDSCAPE BRICKS
114	INTERIOR BRICKS
115	EXTERIOR BRICKS
116	MECHANICAL BLOCKS
117	ELECTRICAL BLOCKS
118	PLUMBING BLOCKS
119	LANDSCAPE BLOCKS
120	INTERIOR BLOCKS
121	EXTERIOR BLOCKS
122	MECHANICAL STONES
123	ELECTRICAL STONES
124	PLUMBING STONES
125	LANDSCAPE STONES
126	INTERIOR STONES
127	EXTERIOR STONES
128	MECHANICAL TILES
129	ELECTRICAL TILES
130	PLUMBING TILES
131	LANDSCAPE TILES
132	INTERIOR TILES
133	EXTERIOR TILES
134	MECHANICAL CARPETS
135	ELECTRICAL CARPETS
136	PLUMBING CARPETS
137	LANDSCAPE CARPETS
138	INTERIOR CARPETS
139	EXTERIOR CARPETS
140	MECHANICAL FLOORS
141	ELECTRICAL FLOORS
142	PLUMBING FLOORS
143	LANDSCAPE FLOORS
144	INTERIOR FLOORS
145	EXTERIOR FLOORS
146	MECHANICAL WALLS
147	ELECTRICAL WALLS
148	PLUMBING WALLS
149	LANDSCAPE WALLS
150	INTERIOR WALLS
151	EXTERIOR WALLS
152	MECHANICAL CEILING
153	ELECTRICAL CEILING
154	PLUMBING CEILING
155	LANDSCAPE CEILING
156	INTERIOR CEILING
157	EXTERIOR CEILING
158	MECHANICAL ROOFING
159	ELECTRICAL ROOFING
160	PLUMBING ROOFING
161	LANDSCAPE ROOFING
162	INTERIOR ROOFING
163	EXTERIOR ROOFING
164	MECHANICAL GLASS
165	ELECTRICAL GLASS
166	PLUMBING GLASS
167	LANDSCAPE GLASS
168	INTERIOR GLASS
169	EXTERIOR GLASS
170	MECHANICAL DOORS
171	ELECTRICAL DOORS
172	PLUMBING DOORS
173	LANDSCAPE DOORS
174	INTERIOR DOORS
175	EXTERIOR DOORS
176	MECHANICAL WINDOWS
177	ELECTRICAL WINDOWS
178	PLUMBING WINDOWS
179	LANDSCAPE WINDOWS
180	INTERIOR WINDOWS
181	EXTERIOR WINDOWS
182	MECHANICAL STAIRS
183	ELECTRICAL STAIRS
184	PLUMBING STAIRS
185	LANDSCAPE STAIRS
186	INTERIOR STAIRS
187	EXTERIOR STAIRS
188	MECHANICAL ELEVATORS
189	ELECTRICAL ELEVATORS
190	PLUMBING ELEVATORS
191	LANDSCAPE ELEVATORS
192	INTERIOR ELEVATORS
193	EXTERIOR ELEVATORS
194	MECHANICAL RAMP
195	ELECTRICAL RAMP
196	PLUMBING RAMP
197	LANDSCAPE RAMP
198	INTERIOR RAMP
199	EXTERIOR RAMP
200	MECHANICAL BALCONY
201	ELECTRICAL BALCONY
202	PLUMBING BALCONY
203	LANDSCAPE BALCONY
204	INTERIOR BALCONY
205	EXTERIOR BALCONY
206	MECHANICAL TERRACE
207	ELECTRICAL TERRACE
208	PLUMBING TERRACE
209	LANDSCAPE TERRACE
210	INTERIOR TERRACE
211	EXTERIOR TERRACE
212	MECHANICAL PORCH
213	ELECTRICAL PORCH
214	PLUMBING PORCH
215	LANDSCAPE PORCH
216	INTERIOR PORCH
217	EXTERIOR PORCH
218	MECHANICAL PATIO
219	ELECTRICAL PATIO
220	PLUMBING PATIO
221	LANDSCAPE PATIO
222	INTERIOR PATIO
223	EXTERIOR PATIO
224	MECHANICAL DRIVEWAY
225	ELECTRICAL DRIVEWAY
226	PLUMBING DRIVEWAY
227	LANDSCAPE DRIVEWAY
228	INTERIOR DRIVEWAY
229	EXTERIOR DRIVEWAY
230	MECHANICAL GARAGE
231	ELECTRICAL GARAGE
232	PLUMBING GARAGE
233	LANDSCAPE GARAGE
234	INTERIOR GARAGE
235	EXTERIOR GARAGE


KBR
 KBR GROUP INC.
 10000 WEST 10TH AVENUE, SUITE 100
 DENVER, CO 80231
 TEL: 303.733.1000
 FAX: 303.733.1001
 WWW.KBR.COM

PROJECT: [REDACTED]
 CLIENT: [REDACTED]
 ARCHITECT: [REDACTED]
 DATE: [REDACTED]

1:100
 1/2" = 1'-0"

